



# HELIX® CYCLONE

Removing unwanted contaminants and recover fines otherwise lost to pond.



## APPLICATIONS

- » Removes unwanted silts and clays
- » Reduces fines normally lost to pond
- » Dewateres product

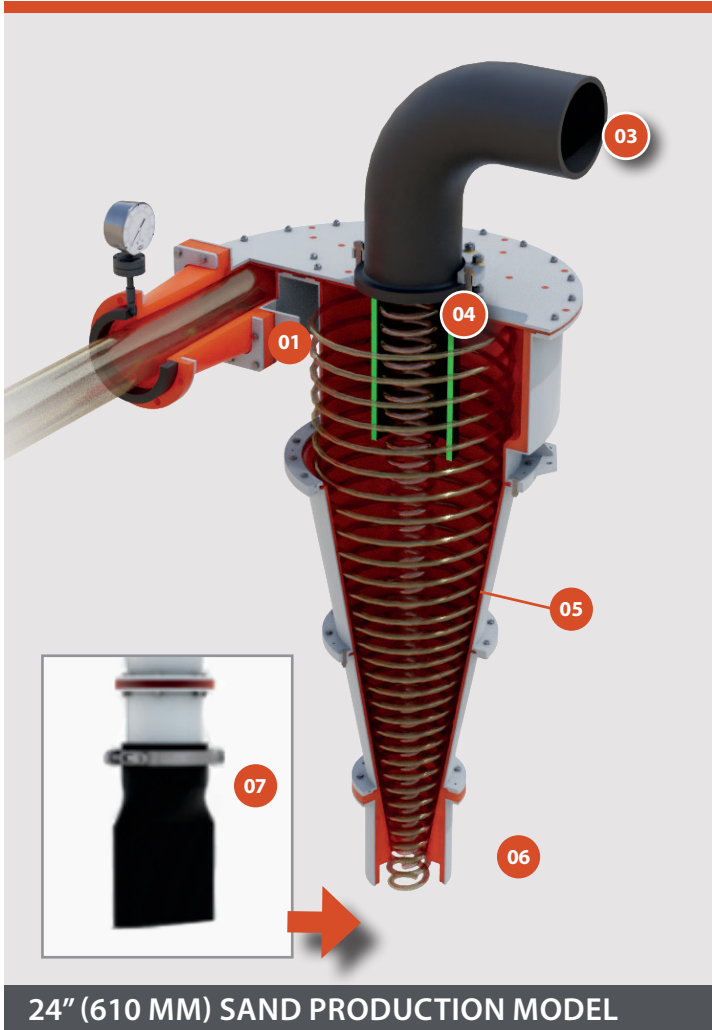


Rock Face to Load Out®



Patented Technology

## FEATURES



### 01/ FEED PIPE

Square to round transition made of high wear urethane.

### 02/ GEOMETRICALLY EFFICIENT INLET

Reduces turbulence of feed, which improves classification, and lowers internal wear. Patent pending.

### 03/ OVERFLOW PIPE

Designed with abrasive-resistant HDPE material.

### 04/ VORTEX FINDER

Prevents short-circuiting (less misplacement of coarse material to the overflow.)

### 05/ URETHANE LINING

Fines recovery models cast of 100% urethane, while sand production models have a steel case and urethane lining to withstand high pressure.

### 06/ PATENT PENDING APEX

Custom-cut for quick, in-the-field application adjustments.

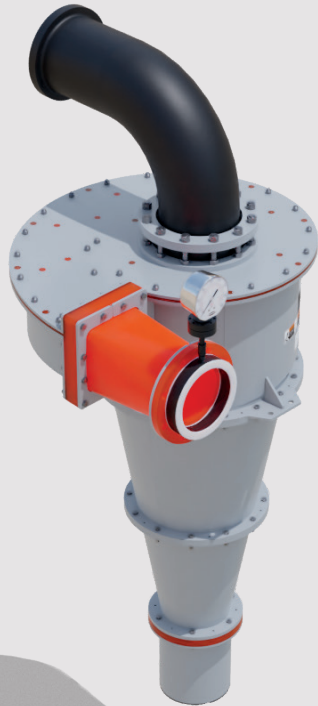
### 07/ OPTIONAL SIPHON ASSIST

Typical cyclone discharge is 50-65% solids. The optional siphon assist can reduce discharge moisture as low as 75% solids.





## MODELS



### SAND PRODUCTION MODELS

- » Structural steel with urethane liner
- » 200 mesh standard cut point



### FINES RECOVERY MODELS

- » Available in 100% cast urethane
- » 400 mesh standard cut point

## APPLICATIONS



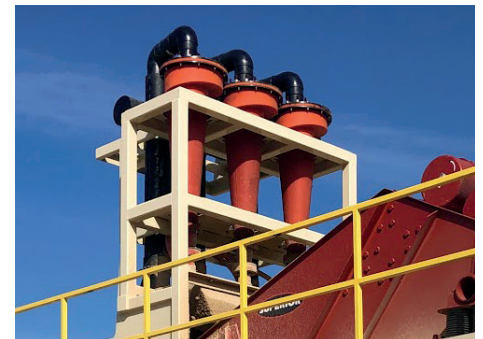
### SIZING

- » Produce necessary cut
- » Reduce water and turbulence for downstream equipment



### DEWATER & DESLIME

- » Reduce water/silt to operation
- » Reduce water and turbulence for downstream equipment



### FINES RECOVERY

- » Recover 400 mesh plus particles
- » Reduce fines going to pond

SPECIFICATIONS

Model Number	Construction	Cyclone Diameter		Cone Angle	Inlet Diameter		VF Diameter		Inlet Pressure		Flow Rate		% Solids	Feed Capacity	
		in	mm	deg.	in	mm	in	mm	psi	kPa	gpm	m³/hr	kg	STPH	MTPH
FINES RECOVERY															
1210CYC	1" (25.4mm) thick Cast Urethane	12	300	10°	4	100	4.6 - 5.8	110 - 140	12 - 25	90 - 400	400 - 750	100 - 180	10%	20	18
1610CYC	1" (25.4mm) thick Cast Urethane	16	400	10°	6	150	6 - 7.6	150 - 190	12 - 25	90 - 800	800 - 1,100	190 - 250	10%	30	27
SAND PRODUCTION															
1220CYC	Structural steel with 1" (25mm) thick urethane liner	12	300	20°	4	100	4.6 - 6	110 - 140	10 - 20	70 - 140	400 - 700	100 - 160	20%	40	36
1630CYC	Structural steel with 1" (25mm) thick urethane liner	16	400	30°	6	150	6.0 - 8	150 - 190	10 - 20	70 - 140	700 - 1,100	160 - 250	25%	80	73
2030CYC	Structural steel with 1" (25mm) thick urethane liner	20	500	30°	6	150	7.5 - 9	190 - 230	10 - 20	70 - 140	800 - 1,400	190 - 320	25%	100	91
2430CYC	Structural steel with 1" (25mm) thick urethane liner	24	600	30°	8	200	8.9 - 11	220 - 280	10 - 20	70 - 140	1,400 - 2,000	320 - 460	25%	150	137
3030CYC	Structural steel with 1" (25mm) thick urethane liner	30	760	30°	10	250	11.2 - 14	280 - 350	10 - 20	70 - 140	2,200 - 3,400	500 - 780	25%	250	228