



FINE MATERIAL WASHER

Typically dewater material to 15-25% moisture in addition to removing silt.



APPLICATIONS

- » Wash, classify and dewater
- » Usually defined as 3/8" or less
- » Unwanted material overflows weirs
- » Heavy material augures up tub
- » Water drains down tub
- » Discharged at 15-25% moisture

FEATURES



01/ SAFEGUARD OUTBOARD BEARING

Off-the-shelf pillow block bearing installed outside tank for protection and easy maintenance. (Not shown)

02/ ADJUSTABLE OVERFLOW WEIR

Encourages overflow water to level, which maximizes fines retention.

03/ LOAD ZONE BAFFLE

Calms water to help maximize fines retention.

04/ VARIETY OF APPLICATION-SPECIFIC SHOES

Manufactured with internal steel plate to hold up in harsh applications.

05/ CURVED BELLY PAN

Eliminates dead spots for material to gather common to 90° angles.

06/ FULLY-GUARDED DRIVE SYSTEM

Utilizes common off-the-shelf, shaft-mounted gear reducer.

07/ HEAVY-DUTY BASE FRAME

Allows for a crane free installation into an existing footprint.

08/ FLUSHBACK NOZZLE

Improves dewatering by removing inactive sand near discharge. (not shown)

OPTIONS

TWIN SCREW

ROAD PORTABLE PACKAGE

REDUCED SCREW SPEED

ROCK GRADE RUBBER WEAR SHOES

ALLOY STEEL WEAR SHOE

MATERIAL DISCHARGE CHUTE

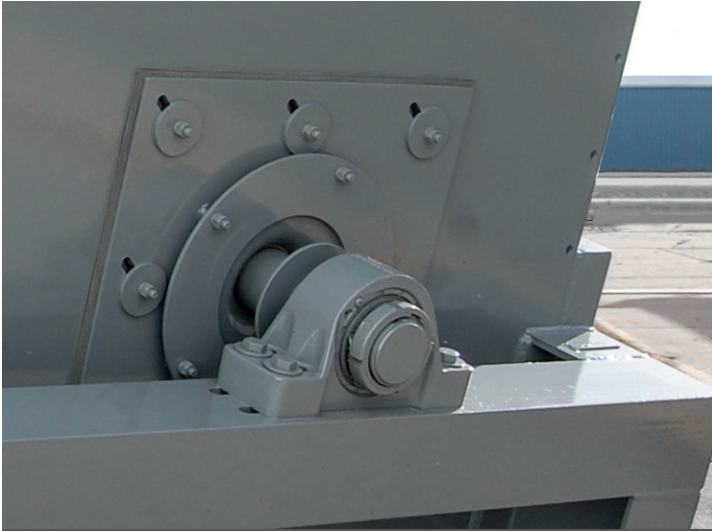
SAFETY COVERS

SKID FRAME

FOLDING WING WALLS

HYDRAULIC DRIVE

FEATURES



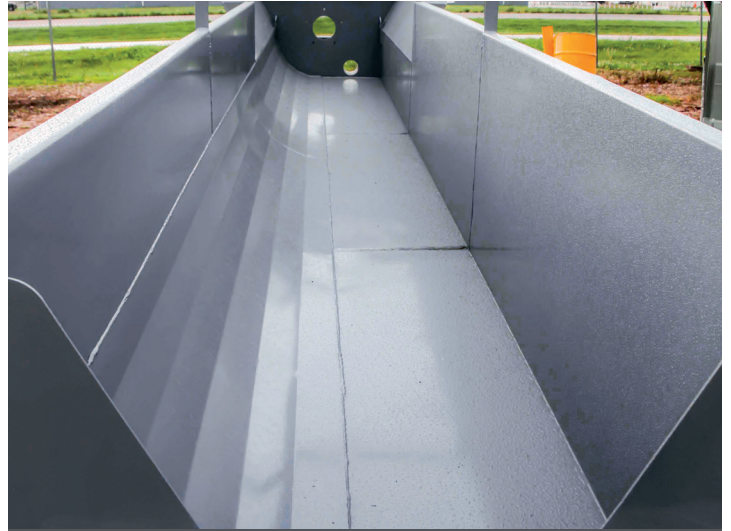
SAFEGUARD OUTBOARD BEARING



OPTION: FLANGE MOUNT BEARING



04/ URETHANE WEAR SHOES



05 / CURVED BELLY PAN



06/ GUARDED DRIVE SYSTEM



08/ FLUSH-BACK NOZZLE

SINGLE SCREW SPECIFICATIONS

Model Number	Screw Diameter		Maximum Material Size		Capacity		Screw Speed rpm	Auger Motor Size		Water Capacity GPM (m ³ /hr)			Estimated Empty Weight		Estimated Operating Weight				
	in	mm	in	mm	stph	mtph		hp	kW	100 Mesh	150 Mesh	200 Mesh	lbs	kg	lbs	kg			
FMW12140BS	12	310	3/8	10	20	19	40	7.5	5.6	150	40	100	30	50	20	2,800	1,280	7,000	3,180
FMW24240BS	24	610	3/8	10	50	46	32	7.5	5.6	500	120	225	60	125	30	7,000	3,180	26,500	12,030
FMW30240BS	30	770	3/8	10	75	69	25	15	11.2	575	140	275	70	160	40	8,600	3,910	28,100	12,750
FMW36250BS	36	920	3/8	10	100	91	20	15	11.2	700	160	330	80	180	50	9,150	4,160	24,950	11,320
FMW3625FBS	36	920	3/8	10	100	91	21	15	11.2	700	160	330	80	180	50	12,742	5,780	29,872	13,550
FMW44320BS	44	1,120	3/8	10	175	160	17	20	15.0	1600	370	750	180	425	100	18,000	8,170	66,000	29,940
FMW4432FBS	44	1,120	3/8	10	175	160	17	25	18.7	1600	370	750	180	425	100	22,200	10,070	70,062	31,780
FMW48350BS	48	1,220	3/8	10	200	182	16	25	18.7	1700	390	850	200	450	110	20,500	9,300	65,500	29,720
FMW5434FBS	54	1,380	3/8	10	275	250	15	30	22.4	1900	440	950	220	575	140	23,000	10,440	107,000	48,540
FMW5434FBS	54	1,380	3/8	10	275	250	14	40	29.9	1900	440	950	220	575	140	30,357	13,770	131,285	59,550
FMW60350BS	60	1,530	3/8	10	340	310	13	40	29.9	2200	500	1050	240	600	140	24,500	11,120	125,000	56,700
FMW66350BS	66	1,680	3/8	10	400	364	12	50	37.3	2400	550	1200	280	650	150	36,000	16,330	135,000	61,240
FMW6636FBS	66	1,680	3/8	10	400	364	11	60	44.8	2400	550	1200	280	650	150	40,344	18,300	131,285	59,550
FMW72380BS	72	1,830	3/8	10	475	432	11	60	44.8	2600	590	1300	295	700	159	33,000	14,970	170,000	77,120
FMW84380BS	84	2,140	3/8	10	550	500	9	75	56.0	3100	710	1600	370	850	200	43,000	19,510	190,000	86,190

TWIN SCREW SPECIFICATIONS

Model Number	Screw Diameter		Maximum Material Size		Capacity		Screw Speed rpm	Auger Motor Size		Water Capacity GPM (m ³ /hr)			Estimated Empty Weight		Estimated Operating Weight				
	in	mm	in	mm	stph	mtph		hp	kW	100 Mesh	150 Mesh	200 Mesh	lbs	kg	lbs	kg			
FMW24240BT	(2) 24	610	3/8	10	100	91	40	(2) 7.5	5.6	890	210	420	100	235	60	14,800	6,720	61,000	27,670
FMW30240BT	(2) 30	770	3/8	10	150	137	32	(2) 15	11.2	1,000	230	490	120	280	70	18,350	8,330	76,000	34,480
FMW36250BT	(2) 36	920	3/8	10	200	182	25	(2) 15	11.2	1,250	290	620	150	340	80	17,000	7,720	84,000	38,110
FMW3625FBT	(2) 36	920	3/8	10	200	182	20	(2) 15	11.2	1,250	290	620	150	340	80	21,605	9,800	59,550	27,020
FMW44320BT	(2) 44	1,120	3/8	10	350	319	20	(2) 20	15.0	2,800	640	1,400	320	675	160	30,000	13,610	62,500	28,350
FMW4432FBT	(2) 44	1,120	3/8	10	350	319	17	(2) 25	18.7	2,800	640	1,400	320	675	160	41,777	18,950	134,000	60,790
FMW48350BT	(2) 48	1,220	3/8	10	400	364	17	(2) 25	18.7	3,000	690	1,450	330	750	180	36,000	16,330	112,000	50,810
FMW54350BT	(2) 54	1,380	3/8	10	550	500	16	(2) 30	22.4	3,500	800	1,750	400	950	220	39,650	17,990	117,250	53,190
FMW5434FBT	(2) 54	1,380	3/8	10	550	500	15	(2) 40	29.9	3,500	800	1,750	400	950	220	55,300	25,090	250,000	113,400
FMW60350BT	(2) 60	1,530	3/8	10	680	619	15	(2) 40	29.9	3,700	850	1,800	410	975	230	44,500	20,190	156,000	70,770
FMW66350BT	(2) 66	1,680	3/8	10	800	728	14	(2) 50	37.3	4,000	910	2,000	460	1,200	280	62,500	28,350	158,900	72,080
FMW6636FBT	(2) 66	1,680	3/8	10	800	728	13	(2) 60	44.8	4,000	910	2,000	460	1,200	280	78,000	35,390	250,026	113,410
FMW72380BT	(2) 72	1,830	3/8	10	950	864	11	(2) 75	56.0	4,500	1,030	2,200	500	1,250	290	67,500	30,620	190,000	86,190
FMW7238FBT	(2) 72	1,830	3/8	10	950	864	11	(2) 100	74.6	4,500	1,030	2,200	500	1,250	290	119,000	53,980	344,000	156,040
FMW84380BT	(2) 84	2,140	3/8	10	1,100	1,000	9	(2) 100	74.6	4,800	1,100	2,500	570	1,350	310	70,500	31,980	210,000	95,260

NOTE: Low HP per ton or Superior efficient gearbox uses less HP than traditional fine material washers.