

COARSE MATERIAL WASHER

Mildly scrubs material greater than 3/4" while removing unwanted material.



APPLICATIONS

- » Remove dust from rock surface
- » Remove sand from feed
- » Unwanted/Deleterious overflow weirs
- » Mild scrubbing of stone and gravel
- » Section of paddles then flights
- » No overlapping of paddles
- » Coarse is usually defined >3/4"

FEATURES



01/ SAFEGUARD OUTBOARD BEARING

Off-the-shelf pillow block bearing installed outside tank for protection and easy maintenance. (Not shown)

02/ ADJUSTABLE OVERFLOW GATE

Allows control of water bed depth for cleaner, drier product.

03/ ALLOY STEEL WEAR PADDLES AND SHOES

Abrasion-resistant cast iron used specifically for mining and earth-handling industries. Guaranteed hardness ensures quality.

04/ SPIRAL FLIGHTS

Moves gravel up incline

05/ CURVED BELLY PAN

Eliminates dead spots for material to gather common to 90° angles.

06/ FULLY-GUARDED DRIVE SYSTEM

Utilizes common off-the-shelf, shaft-mounted gear reducer.

OPTIONS

ADDITIONAL REVOLUTIONS OF PADDLES

DISCHARGE CHUTE

HYDRAULIC DRIVE

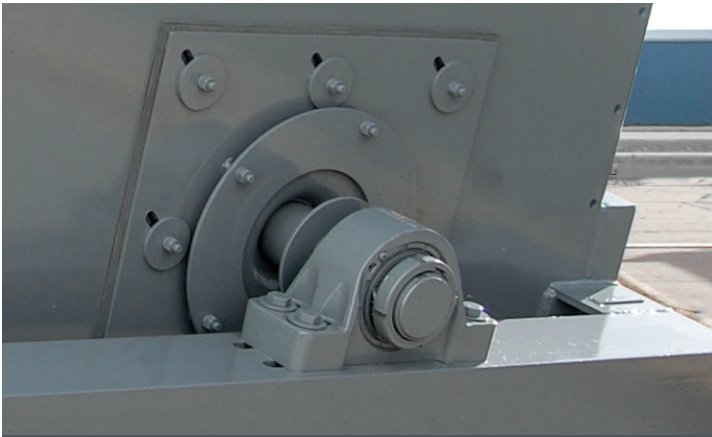
URETHANE WEAR SHOES

BOLT-ON PADDLE BASES

SAFETY COVERS

ROAD PORTABLE PACKAGE

FEATURES



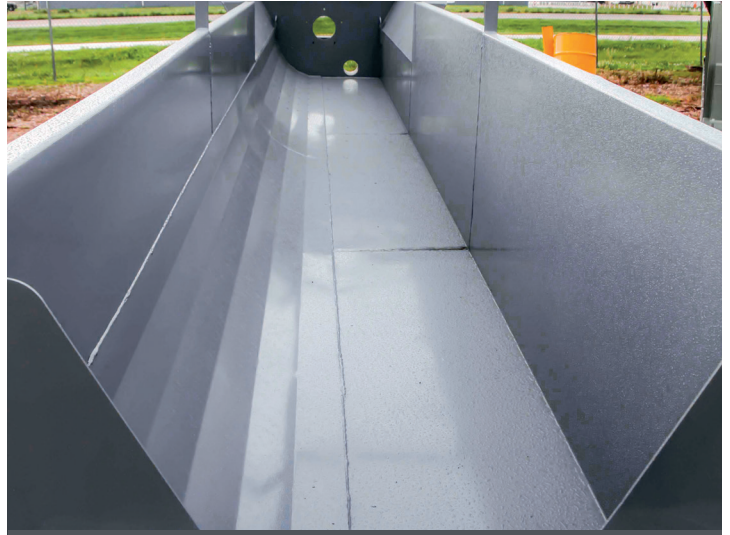
OPTION: SAFEGUARD OUTBOARD BEARING



OPTION: FLANGE MOUNT BEARING



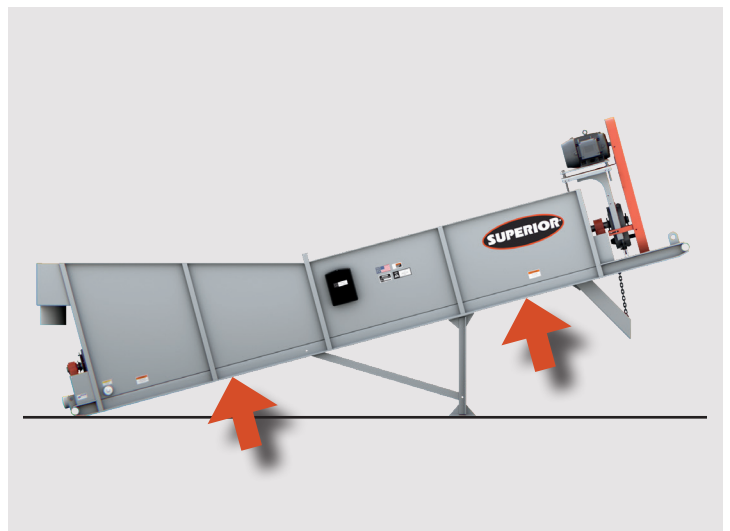
ABRASION-RESISTANT A-532 WEAR PADDLES



CURVED BELLY PAN



FULLY-GUARDED DRIVE SYSTEM



RIGID SKID

SINGLE SCREW SPECIFICATIONS

Model Number	Screw Diameter		Maximum Material Size		Capacity		Screw Speed		Motor			Water Capacity		Empty Weight		Loaded Weight	
	in.	mm	in.	mm	stph	mtph	fpm	rpm	hp	kW	rpm	GPM	m ³ /hr	lbs.	kg	lbs.	kg
CMW24180BS	24	610	1.5	38	60 - 75	55 - 69	120	40	15	11	1,750	300 - 400	70 - 100	8,000	3,630	23,000	10,440
CMW30180BS	30	770	2.0	51	100 - 125	91 - 114	300	37	20	15	1,750	300 - 500	70 - 120	9,000	4,090	27,000	12,250
CMW30240BS	30	770	2.0	51	100 - 125	91 - 114	300	37	25	19	1,750	250 - 500	60 - 120	10,700	4,860	33,700	15,290
CMW36180BS	36	920	3.0	76	150 - 175	137 - 160	300	30	25	19	1,750	400 - 600	100 - 140	11,300	5,130	35,300	16,020
CMW3618FBS	36	920	2.4	60	149 - 176	136 - 160	300	32	30	22	1,750	400 - 600	100 - 140	12,544	5,690	35,300	16,020
CMW36280BS	36	920	3.0	76	150 - 175	137 - 160	300	30	30	22	1,750	400 - 600	100 - 140	14,400	6,540	49,500	22,460
CMW44200BS	44	1,120	3.0	76	200 - 250	182 - 228	300	26	30	22	1,750	500 - 750	120 - 180	15,000	6,810	47,000	21,320
CMW4420FBS	44	1,120	3.0	75	200 - 250	182 - 228	300	26	40	30	1,750	500 - 750	120 - 180	18,584	8,430	36,574	16,590
CMW44320BS	44	1,120	3.0	76	200 - 250	182 - 228	300	26	50	37	1,750	500 - 750	120 - 180	19,300	8,760	67,300	30,530
CMW48240BS	48	1,220	3.5	89	200 - 250	182 - 228	300	24	30	22	1,750	500 - 750	120 - 180	N/A	N/A	N/A	N/A
CMW48320BS	48	1,220	3.5	89	220 - 275	200 - 250	300	24	40	30	1,750	500 - 750	120 - 180	N/A	N/A	N/A	N/A

TWIN SCREW SPECIFICATIONS

Model Number	Screw Diameter		Maximum Material Size		Capacity		Screw Speed		Motor			Water Capacity		Empty Weight		Loaded Weight	
	in.	mm	in.	mm	stph	mtph	fpm	rpm	hp	kW	rpm	GPM	m ³ /hr	lbs.	kg	lbs.	kg
CMW30180BT	(2) 30	770	2.0	51	200 - 250	182 - 227	300	37	(2) 20	(2) 15	1,750	500 - 700	120 - 160	13,700	6,220	48,700	22,090
CMW30240BT	(2) 30	770	2.0	51	200 - 250	182 - 227	300	37	(2) 25	(2) 19	1,750	600 - 1,000	140 - 230	19,300	8,760	65,300	29,620
CMW36180BT	(2) 36	920	3.0	76	250 - 300	227 - 273	300	30	(2) 25	(2) 19	1,750	700 - 1,200	160 - 280	17,000	7,720	65,000	29,490
CMW3618FBT	(2) 36	920	2.4	60	285 - 315	314 - 347	300	32	(2) 30	(2) 22	1,750	700 - 1,200	160 - 280	22,640	10,270	36,574	16,590
CMW36280BT	(2) 36	920	3.0	76	250 - 300	227 - 273	300	30	(2) 25	(2) 19	1,750	700 - 1,200	160 - 280	23,000	10,440	72,000	32,660
CMW44200BT	(2) 44	1,120	3.0	76	450 - 500	409 - 455	300	26	(2) 30	(2) 22	1,750	1,000 - 1,500	230 - 350	28,500	12,930	95,500	43,320
CMW4420FBT	(2) 44	1,120	3.0	75	397 - 496	360 - 450	300	26	(2) 40	(2) 30	1,750	1,000 - 1,500	230 - 350	34,480	15,640	49,912	22,640
CMW44320BT	(2) 44	1,120	3.0	76	450 - 500	409 - 455	300	26	(2) 30	(2) 22	1,750	1,000 - 1,500	230 - 350	39,600	17,970	136,000	61,690
CMW48240BT	(2) 48	1,220	3.5	89	450 - 500	409 - 455	300	24	(2) 30	(2) 22	1,750	1,000 - 1,500	230 - 350	N/A	N/A	N/A	N/A
CMW48320BT	(2) 48	1,220	3.5	89	450 - 500	409 - 455	300	24	(2) 40	(2) 30	1,750	1,000 - 1,500	230 - 350	N/A	N/A	N/A	N/A