



# BLADE MILL WASHER

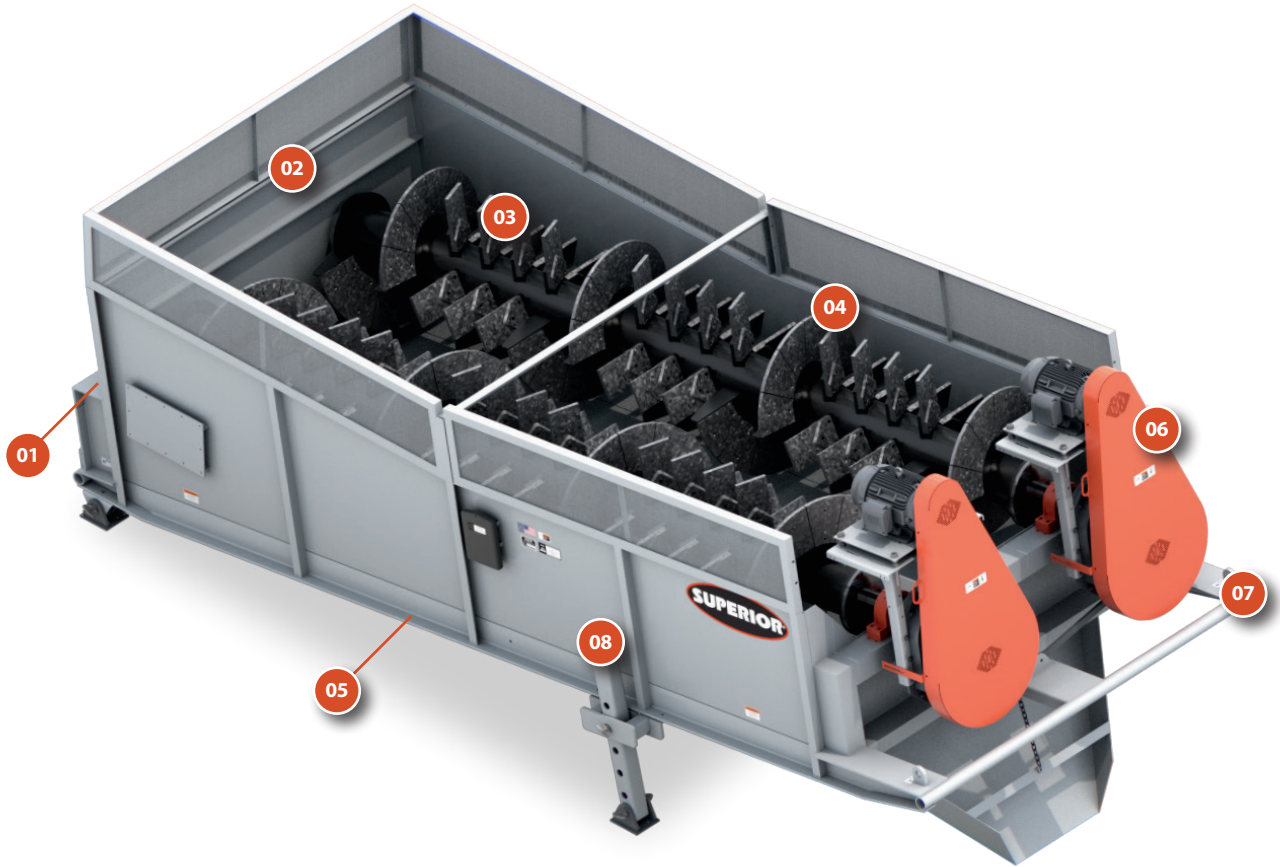
Dry feed converted to slurry for screening efficiency.



## APPLICATIONS

- » Liquifies material before screening
- » Improves screening efficiency up to 15%
- » Improves sand equivalency (SE)
- » Break up soluble clay, mud, silt or soil
- » Remove organic materials

## FEATURES



### 01/ SAFEGUARD OUTBOARD BEARING

Off-the-shelf pillow block bearing installed outside tank for protection and easy maintenance. (Not shown)

### 02/ ADJUSTABLE OVERFLOW GATE

Allows control of water bed depth for cleaner, drier product.

### 03/ ALLOY STEEL WEAR PADDLES AND SHOES

Abrasion-resistant cast iron used specifically for mining and earth-handling industries. Guaranteed hardness ensures quality.

### 04/ SPIRAL FLIGHTS

Moves gravel up incline

### 05/ CURVED BELLY PAN

Eliminates dead spots for material to gather common to 90° angles.

### 06/ FULLY-GUARDED DRIVE SYSTEM

Utilizes common off-the-shelf, shaft-mounted gear reducer.

### 07/ RIGID SKID

Allows for easy assembly.

### 08/ OPTIONAL ADJUSTABLE LEGS

## OPTIONS

ADDITIONAL REVOLUTIONS OF PADDLES

DISCHARGE CHUTE

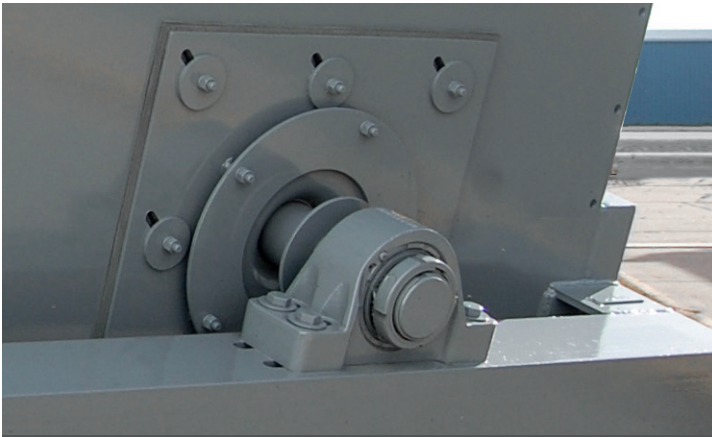
HYDRAULIC DRIVE

URETHANE WEAR SHOES

BOLT-ON PADDLE BASES

SAFETY COVERS

## FEATURES



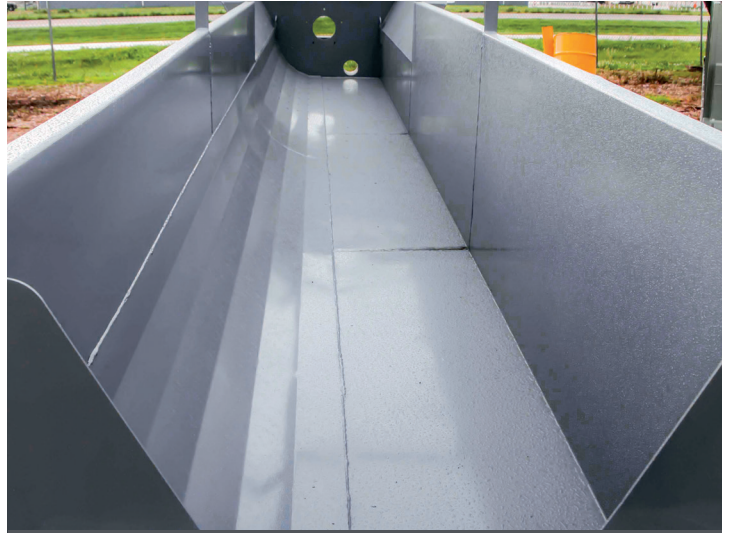
OPTION: SAFEGUARD OUTBOARD BEARING



OPTION: FLANGE MOUNT BEARING



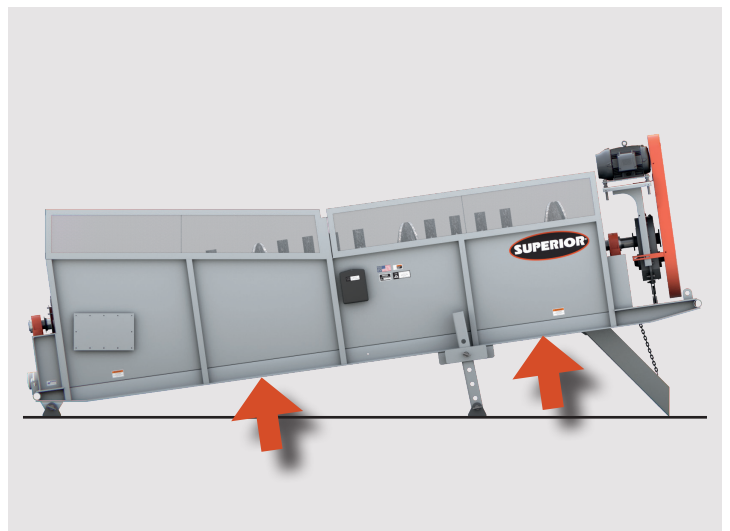
ABRASION-RESISTANT A-532 WEAR PADDLES



CURVED BELL Y PAN



FULLY-GUARDED DRIVE SYSTEM



RIGID SKID

## SINGLE SHAFT SPECIFICATIONS

Model Number	Screw Diameter		Max Material Size		Operat- ing Angle	Fixed Legs	Ad- just. Legs	Capacity		Screw Speed	Motor			Water Capacity		Empty Weight		Loaded Weight	
	in	mm	in	mm				stph	mtph		rpm	hp	kW	rpm	GPM	m <sup>3</sup> /hr	lbs	kg	lbs
BMW24180BS	24	610	1.5	38	2°-8°	8°	2°-8°	60 - 110	55 - 100	40	15	11	1,750	120 - 130	28-75	7,000	3,180	20,000	9,080
BMW24240BS	24	610	1.5	38	2°-8°	8°	2°-8°	60 - 110	55 - 100	40	20	15	1,750	120 - 330	28-75	7,800	3,540	24,800	11,250
BMW30180BS	30	770	2.0	51	2°-8°	8°	2°-8°	100 - 165	91 - 150	37	20	15	1,750	200 - 495	46-113	9,500	4,310	26,500	12,030
BMW30240BS	30	770	2.0	51	2°-8°	8°	2°-8°	100 - 165	91 - 150	37	25	19	1,750	200 - 495	46-113	10,600	4,810	32,600	14,790
BMW36180BS	36	920	3.0	76	2°-8°	8°	2°-8°	150 - 250	137 - 228	30	25	19	1,750	300 - 750	69-171	11,000	4,990	34,000	15,430
BMW3618FBS	35.5	900	2.5	63	4°-6°	6°	N/A	148 - 176	135 - 160	32	40	30	1,750	296 - 598	68-120	12,125	5,500	30,423	13,800
BMW36280BS	36	920	3.0	76	2°-8°	8°	2°-8°	150 - 250	137 - 228	30	30	22	1,750	300 - 750	69-171	14,000	6,360	48,000	21,780
BMW44200BS	44	1,120	3.5	89	2°-8°	8°	2°-8°	200 - 335	182 - 305	26	26	19	1,750	400 - 1,005	91-229	15,000	6,810	44,000	19,960
BMW4420FBS	43.3	1,100	3.0	75	4°-6°	6°	N/A	198 - 248	180 - 225	26	50	37	1,750	396 - 744	90-169	20,635	9,360	36,574	16,590
BMW44320BS	44	1,120	3.5	89	2°-8°	8°	2°-8°	200 - 335	182 - 305	26	50	37	1,750	400 - 1,005	91-229	19,500	8,850	64,500	29,260
BMW48240BS	48	1,220	3.5	89	2°-8°	8°	2°-8°	220 - 360	200 - 328	24	40	30	1,750	440 - 1,080	100-246	15,000	6,810	44,000	19,960

## TWIN SHAFT SPECIFICATIONS

Model Number	Screw Diameter		Max Material Size		Operat- ing Angle	Fixed Legs	Ad- just. Legs	Capacity		Screw Speed	Motor			Water Capacity		Empty Weight		Loaded Weight	
	in	mm	in	mm				stph	mtph		rpm	hp	kW	rpm	GPM	m <sup>3</sup> /hr	lbs	kg	lbs
BMW30180BT	(2) 30	770	2.0	51	2°-8°	8°	2°-8°	120 - 220	110 - 200	37	(2) 20	15	1,750	240 - 660	55 - 150	14,000	6,360	48,000	21,780
BMW30240BT	(2) 30	1,120	2.0	51	2°-8°	8°	2°-8°	120 - 220	110 - 200	37	(2) 25	19	1,750	240 - 660	55 - 150	19,300	8,760	59,000	26,770
BMW36180BT	(2) 36	920	3.0	76	2°-8°	8°	2°-8°	300 - 500	273 - 455	30	(2) 25	19	1,750	600 - 1,500	137 - 341	17,800	8,080	62,800	28,490
BMW3618FBT	(2) 35.5	900	2.5	63	4°-6°	6°	N/A	315 - 350	285 - 315	32	(2) 30	22	1,750	630 - 1,050	144 - 239	22,046	10,000	49,912	22,640
BMW36280BT	(2) 36	920	3.0	76	2°-8°	8°	2°-8°	300 - 500	273 - 455	30	(2) 30	22	1,750	600 - 1,500	137 - 341	23,000	10,440	79,310	35,980
BMW44200BT	(2) 44	1,120	3.5	89	2°-8°	8°	2°-8°	400 - 670	364 - 610	26	(2) 30	22	1,750	800 - 2,010	182 - 457	30,000	13,610	80,000	36,290
BMW4420FBT	(2) 43.3	1,100	3.0	75	4°-6°	6°	N/A	400 - 500	360 - 450	26	(2) 50	37	1,750	800 - 1,500	182 - 341	34,480	15,640	69,136	31,360
BMW44320BT	(2) 44	1,120	3.5	89	2°-8°	8°	2°-8°	400 - 670	364 - 610	26	(2) 50	37	1,750	800 - 2,010	182 - 457	36,600	16,610	122,000	55,340
BMW48240BT	(2) 48	1,220	3.5	89	2°-8°	8°	2°-8°	440 - 720	400 - 655	24	(2) 50	37	1,750	880 - 2,160	200 - 491	39,600	17,970	120,000	54,440
BMW60320BT	(2) 60	1,530	5.0	127	2°-8°	8°	2°-8°	610 - 1,000	555 - 909	22	(2) 75	56	1,750	1,220 - 3,000	278 - 682	53,050	24,070	81,000	36,750